

RW COUNTER CHECK

RW Counter Check unit for handling self-adhesive labels



RW COUNTER CHECK is a unit for handling self-adhesive labels on reels which can:

- Rewind the labels clockwise or anti-clockwise and handle different reel core diameters;
- Count the labels, using an incremental counter for labels dispensed or a countdown counter;
- Check the availability of the labels and stop in the event of a missing label.



When working as a rewinder it can rewind labels from rolls with a max. diameter of 300 mm (400 mm for the BIG version), wound facing inwards or outwards, with a mandrel ranging from 46 to 110 mm (76 mm in the BIG version), onto rolls with a max diameter of 300 mm (400 mm for the BIG version) with face-in or face-out winding. The PLUS is equipped with an interchangeable rewinder for 1-inch mandrel. The average rewinding speed is over 50 m/min.



When working as a control device, a photocell not only counts the labels but is also able to check the availability of the labels and warn if they are missing, with the possibility to stop the system in order to reposition the labels. This operation does not require settings as it is performed by the control unit which acquires the label length via self learning. An ultrasonic detector is available for use with transparent labels.



The control panel incorporates a 2-line, 20 character display and 7 function keys for programming:

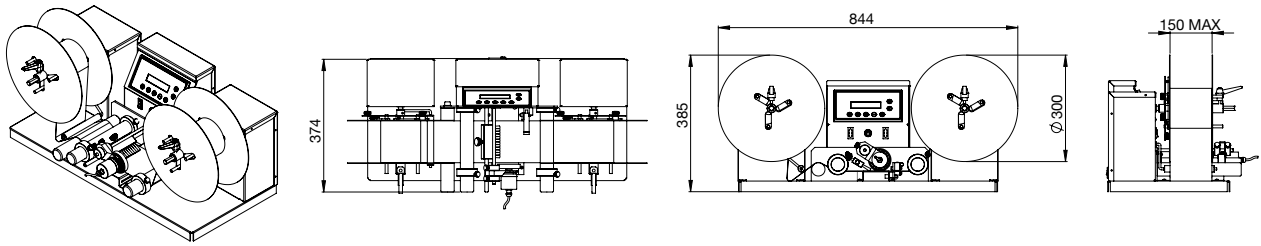
- The rewind speed
- Face-in or face-out winding
- Check for missing labels or spacing
- Incremental or count-down pieces counter with automatic stop

RWR COUNTER CHECK is available in three versions: BASIC, PLUS and BIG; all versions can be supplied with meter counters as an option.

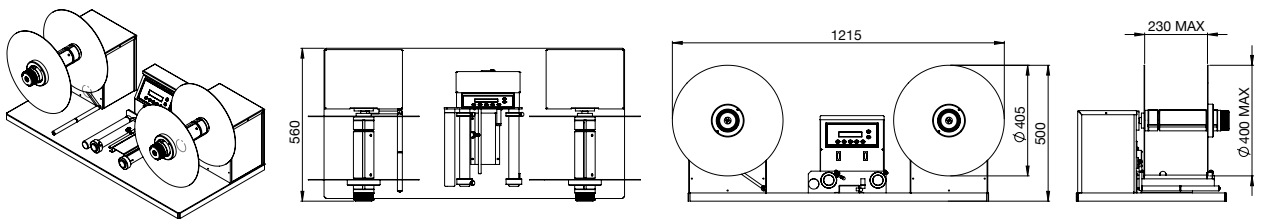


Technical specifications	RW COUNTER BASIC	RW COUNTER PLUS	RW COUNTER BIG
Max label width	150 mm	150 mm	230 mm
Speed	Approx 50 metres/minute	Approx 50 metres/minute	Approx 50 metres/minute
Reel diameter	300 mm	300 mm	400 mm
Unwinder mandrel diameter	40-110 mm	40-110 mm	76 mm
Rewinder mandrel diameter	40-110 mm	40-110 mm / 25,2 mm	76 mm
Power supply	230 Vac - 50 Hz	230 Vac - 50 Hz	230 Vac - 50 Hz
Power draw	150 W	150 W	400 W
Dimensions	844 x 385 x 374 (H)	844x 385 x 374 (H)	1215 x 560 x 500 (H)
Weight Peso	30 Kg	30 Kg	45 Kg

RW COUNTER CHECK BASIC



RW COUNTER CHECK BIG



RW COUNTER CHECK EXTRA

